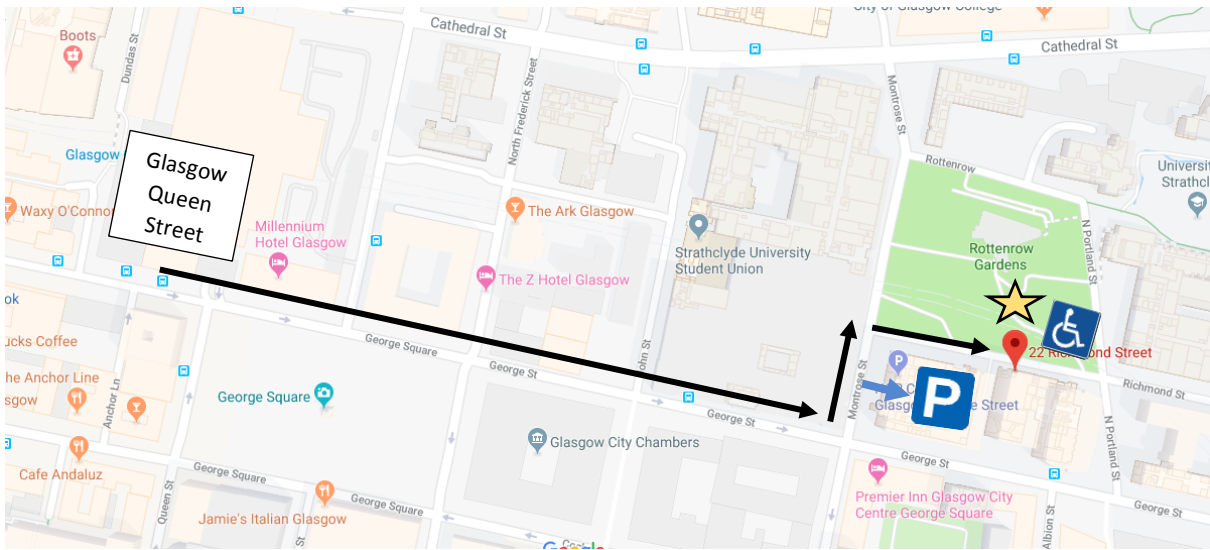


# Scottish Insight Institute Location



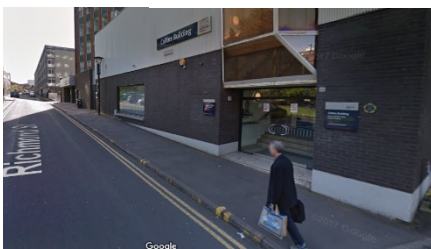
The entrance to the Scottish Insight Institute is on Richmond Street. Coming from George Street way, turn left onto Montrose Street, then second right (adjacent to the grass).



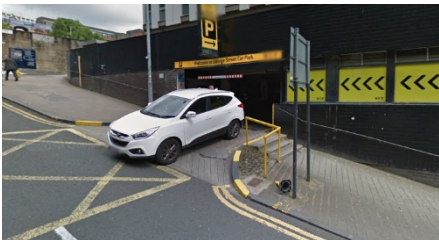
To enter the Paid Parking area, turn left onto Montrose Street from George Street. The entrance is the first right you see on the hill. It is an underground car park.



The Disabled Entrance is to the right of the main entrance on Richmond Street. The Disabled Parking Area is opposite the disabled entrance on Richmond Street



Entrance



Entrance



Entrance & Parking